



MINERAL PROCESSING SOLUTIONS

FOR AGGREGATES, MINING,
AND RECYCLING INDUSTRIES



MEKA AT A GLANCE

WHO WE ARE?

MEKA is a world-class manufacturer and supplier of Complete Plants and Equipment to the Concrete batching plant and Mineral Processing sectors. The name MEKA is synonymous with efficiency and quality in more than 110 countries around the world.

35+ YEARS EXPERIENCE

Founded by an engineer, MEKA is a family-owned company. True to its roots, MEKA excels in engineering of high-end products at the lowest service lifetime costs. Through continuous investment into engineering and manufacturing capacity, MEKA offers the best lifetime value to its customers.

"MEKA is ready to meet the evolving global needs for the ready-mix concrete and mineral processing solutions required for the construction of a better world."

*Mehmet Kaybal
B.Sc. ME, FOUNDER & CEO*



%100 FULL SERVICE

From sales to final delivery, everyone on the MEKA staff is dedicated to the provision of the highest quality service to our customers.

We provide in-depth details of the process early in the task and update our customers on specific details along the way. Every plant is designed with the customer in mind and is backed by service extending years beyond the delivery of the product through the support of our local partners. Our dedicated spare parts warehouses around the world and our in-house MEKA engineers who are ready to visit our clients' sites.

IMAGES

Cover Total Combine Capacity 1000 TPH Three-Stage Limestone Crushing Plant / Israel

1 250 TPH Two-Stage Limestone Crushing Plant / CIS

2 Meka Portable VSI Crusher / USA

3 M 100 Meka Mobile Concrete Plant / UK

4 Meka Stationary Concrete Plants Engineered for Strabag / Dam Construction Project / Turkey

5 Zinc-Lead Ore Processing Plant / Turkey



R&D IS IN THE DNA OF MEKA

MEKA Makes difference. We listen to our customers and deliver the products they need.

MEKA is a State Recognized Research and Development Center, which is a privileged position that allows us to set bolder targets for the future. More than 50 R&D Engineers from different disciplines work daily with the best draftsmen to bring you better products. We are currently working on more than 20 new projects that will be ready to meet the challenges that the changing market dynamics will bring.



90.000m²+ MANUFACTURING SPACE

MEKA operates three specialized manufacturing facilities, each of which is crafted to provide optimum efficiency and service. When partnered with local service centers, MEKA boasts unparalleled manufacturing power. We currently have 90,000 m² total storage space, with more in planning.

Annual manufacturing capacity for concrete plants: 250+, for crushing plants: 150+.

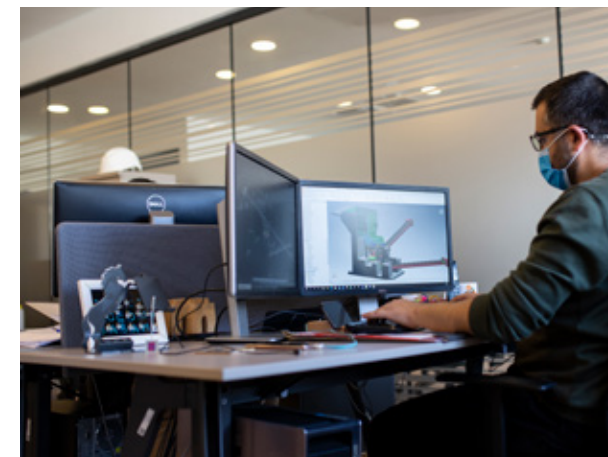


500+ EMPLOYEES

MEKA is home to more than 500 employees, and the family is being added to day by day to ensure the provision of even better service to our clients. With the inclusion of our supplier base, our extended family numbers over 2000 people, consisting of hard-working fabricators, quality control engineers, designers, sales staff and more ...



Scenes from MEKA Factories



We work continuously with well-known companies in the world, provide solutions to world-class projects and you with insights.





IMAGES

6 300 TPH Primary Impact Crusher / Holcim / Belgium

7 Portable Crushing Unit



MINERAL PROCESSING SOLUTIONS

FOR AGGREGATES, MINING,
AND RECYCLING INDUSTRIES

Minerals are an indispensable part of our lives. Yet as everything else they are finite. We need to make best use of them. Keep the waste at a minimum while keeping operating expenses at the minimum. At MEKA, we invest heavily in R&D to provide safer, better and profitable solutions.

MEKA provides complete solutions for aggregate producers, recycling plant operators, industrial mineral processing plants and various mines. We begin working with our customers early in the investment to adapt our standard offerings to their individual needs.

Our process engineers prepare a simulation of the crushing and screening plant to present outcomes of different plant flows and equipment selections. Chutes, walkways, transfer points, make a significant difference during the operation. Our plant engineers carefully craft all these details to give you the most efficient plant. Our product line is continuously improved to keep up and lead the constantly developing technological advancements.

MEKA MINERAL PROCESSING SOLUTIONS

- > Heavy duty feeding systems for Mines
- > Crushers for Hard Minerals
- > Impactor Series
- > Sand Machines
- > Solutions to remove clay from rock and sand
- > Horizontal and Incline Screens
- > Wet processing solutions
- > Mobile solutions

A Dependable Solution Partner

It is no surprise that MEKA is becoming a reliable partner for many projects all over the world. Being able to engineer and manufacture the complete project in-house has allowed us to serve the quality and reliability expectations of our customers

MEKA FEEDERS

PROPER FEEDING ENSURES
EFFECTIVE CRUSHING

MAF SERIES APRON FEEDERS

Width	mm	900	1200	1500	1800
	foot	3	4	5	6
Capacity*	mtph	110 - 350	230 - 680	350 - 1100	600 - 1750
	stph	121 - 385	253 - 749	385 - 1212	661 - 1929
Maximum Feed Size	mm	380	520	650	830
	inch	15	20	26	32
Chain Speed	m/s	0,1 - 0,3	0,1 - 0,3	0,1 - 0,3	0,1 - 0,3
	fpm	20 - 60	20 - 60	20 - 60	20 - 60

* Capacity Figures are provided for: 50% Bed Depth, 0,1-0,3m/s chain speed and for material weighing 1.6 t/m³ or 100 lbs/ft³. Capacity values are indicative only and depend not only on feeder size but also on feeder inclination, feed gradation, etc.
Other sizes are also available on request

MBF SERIES BELT FEEDERS

		MBF 6525	MBF 8025	MBF 1025	MBF 1225
Width x Length	mm x mm	650 x 2500	800 x 2500	1000 x 2500	1200 x 2500
	inch x feet	26 x 8	31 x 8	40 x 8	48 x 8
Power	kW	3	4	5.5	7.5
	HP	4	5.5	7.5	10
Capacity*	mtph	250	350	450	550
	stph	272	385	495	606
Belt Speed	m/sec	0,35	0,35	0,35	0,35
	fpm	70	70	70	70
Maximum Feed Size	mm	100	150	150	150
	inch	4"	6"	6"	6"

* At specified inclination and for material weighing 1.6 t/m³ or 100 lbs/ft³. Capacity values are indicative only and depend not only on feeder size but also on feeder inclination, feed gradation, etc.
Other sizes are also available on request.

MSF SERIES PAN FEEDERS WITH SCALPER

		MSF 0965	MSF 1176	MSF 1390	MSF 1690	MSF 1890
W x L / Feeder	mm x mm	900x3500	1100x4600	1300x5000	1600x5000	1800x5000
	inchxfeet	35 x 13¾	43 x 15	51 x 16¾	63 x 16¾	71 x 16¾
Drive	kW	2 x 6.4	2 x 8	2 x 13.9	2 x 19	2 x 24
	HP	2 x 10.3	2 x 11.9	2 x 18.6	2 x 25	2 x 34.6
W x L / Scalper	mm	1000x3000	1200x3000	1400x4000	1900x4000	1900x4000
	feet	3¼ x 10	4 x 10	4½ x 13	6¼ x 13	6¼ x 13
Power	kW	2 x 6.1	2 x 7.5	2 x 12	2 x 13.9	2 x 13.9
	HP	2 x 8.3	2 x 10	2 x 19.4	2 x 22.8	2 x 22.8
Capacity*	mtph	250-400	400-640	500-825	650-1000	700-1120
	stph	275-440	440-705	551-909	716-1102	771-1234
Maximum feed size	mm	600	800	900	1200	1400
	inch	24"	32"	35"	47"	55"

* At specified inclination and for material weighing 1.6 t/m³ or 100 lbs/ft³. Capacity values are indicative only and depend not only on feeder size but also on feeder inclination, feed gradation, etc.

MWF SERIES WOBLER FEEDERS

		MWF 1035	MWF 1235	MWF 1440	MWF 1640	MWF 1660	MWF 1860
Available Settings	mm	40-60-80	40-60-80	40-60-80	40-60-80	40-60-80	40-60-80
		100-150	100-150	100-150	100-150	100-150	100-150
	inch	1.5 - 2.5	1.5 - 2.5	1.5 - 2.5	1.5 - 2.5	1.5 - 2.5	1.5 - 2.5
		3 - 4 - 6	3 - 4 - 6	3 - 4 - 6	3 - 4 - 6	3 - 4 - 6	3 - 4 - 6
Capacity*	mtph	200-300	300-400	350-450	400-600	440-650	650-1000
	stph	220-330	330-440	385-496	440-661	440-716	716-1102
Power	kW	22	22	30	37	2x37	2x37
	HP	30	30	40	50	2x50	2x50

* At specified inclination and for material weighing 1.6 t/m³ or 100 lbs/ft³. Capacity values are indicative only and depend not only on feeder size but also on feeder inclination, feed gradation, etc.
Other sizes are also available on request



MGF SERIES GRIZZLY FEEDERS

		MGF 0625	MGF 0942	MGF 1152	MGF 1260	MGF 1360	MGF 1460	MGF 1660
Width x Length	mm x mm	650x2500	900x4200	1100x5200	1200x6000	1300x6000	1400x6000	1600x6000
	inchxfeet	25 x 8¼	35 x 14	43 x 17	47 x 20	51 x 20	55 x 20	63 x 20
Power	kW	2 x 4	2 x 6.1	2 x 10.1	2 x 11.9	2 x 13.9	2 x 13.9	2 x 19
	HP	2 x 5.5	2 x 8	2 x 13.6	2 x 16	2 x 18.9	2 x 18.9	2 x 25
Capacity*	mtph	100-200	250-400	400-640	450-750	500-825	550-875	650-1000
	stph	110-220	275-440	440-706	495-825	550-907	605-960	715-1100
Length of Grizzly		Single Section			Double Section			
	mm	1000	1500	2000	2800	2800	2800	2800
	inch	40	61	79	110	110	110	110
Maximum Feed Size	mm	350	600	800	900	900	900	1200
	inch	14	24	32	36	36	36	47

* At specified inclination and for material weighing 1.6 t/m³ or 100 lbs/ft³. Capacity values are indicative only and depend not only on feeder size but also on feeder inclination, feed gradation, etc.

MEKA CRUSHERS

CRUSHERS AND IMPACTORS THAT
MAKE YOU MORE MONEY FOR
YOUR OPERATIONS

MJ SERIES JAW CRUSHERS

		PRIMARY					SECONDARY	
		MJ60	MJ65	MJ90	MJ110	MJ130	MJS90	MJS110
Feed Opening	mm	610 x 380	650 x 500	900 x 650	1100 x 850	1300 x 1000	900 x 200	1100 x 350
	inch	24 x 15	25.6 x 19.6	35.4 x 25.6	43.3 x 33.5	51.2 x 39.4	35.4 x 8	43.3 x 13.8
CSS (Min - Max Setting)	mm	40 - 150	40 - 150	60 - 150	100 - 200	125 - 250	25-75	25-100
	inch	1.57 - 5.9	1.57 - 5.9	2.4 - 5.9	3.9 - 7.9	4.9 - 9.8	1-2,9	1-3,9
Capacity*	mtph	20 - 80	25 - 100	50 - 200	100 - 300	275 - 600	10 - 80	40-200
	stph	22 - 88	27 - 110	55 - 220	110 - 330	303 - 661	11 - 88	44 - 220
Power	kW	30	45	75	132	160	30	75
	Hp	40	60	100	180	220	40	100
Weight**	kg	6000	7000	11400	33000	43000	6000	11000
	lbs	13228	15432	25132	72752	94798	13228	24250

* For material weighing 1.6 t/m³ or 100 lbs/ft³. Capacity values are indicative only, crusher performance may vary depending on the feed gradation, feed moisture content, crushability of the material, crusher rpm, installed power and the crushing circuit design.

** Weights shown do not include drive motor package, support legs, maintenance platform, inlet and outlet chutes.

MJC SERIES JAW CRUSHERS

		MJC110	MJ140
		Feed Opening	1070 x 770
CSS (Min - Max Setting)	mm	42.1 x 30.3	55 x 47
	inch	75 - 210	125 - 250
Capacity*	mtph	2.9 - 8.2	4.9 - 9.8
	stph	135 - 340	340 - 970
Power	kW	148 - 374	374 - 1069
	Hp	110	200
Weight**	kg	150	300
	lbs	19000	52000
		41887	114640

* For material weighing 1.6 t/m³ or 100 lbs/ft³. Capacity values are indicative only, crusher performance may vary depending on the feed gradation, feed moisture content, crushability of the material, crusher rpm, installed power and the crushing circuit design.

** Weights shown do not include drive motor package, support legs, maintenance platform, inlet and outlet chutes.



MPI SERIES PRIMARY IMPACTORS

		MPI 1111	MPI 1114	MPI 1313	MPI 1515	MPI 1620
		Rotor Diameter	1100	1100	1300	1500
Rotor Width	mm	43	43	51	59	63
	inch	1070	1400	1300	1500	2000
Feed Opening	mm	43	55	51	59	79
	inch	1110 x 924	1000 x 1400	1320 x 1200	1540 x 1360	2040 x 1630
Maximum Feed Size	mm	43 x 36	39 x 55	52 x 47	61 x 54	80 x 64
	inch	600	600	900	1000	1300
Capacity*	mtph	24	24	35	39	51
	stph	150 - 200	250 - 350	300 - 500	400 - 600	600 - 950
Power	kW	165 - 220	275 - 385	330 - 550	440 - 660	660 - 1050
	HP	160	200	250	315	500
Weight**	kg	220	275	340	430	680
	lbs	15100	17400	22400	26800	40500
		33290	37037	49380	59080	89290

* For material weighing 1.6 t/m³ or 100 lbs/ft³. For material weighing 1.6 t/m³ or 100 lbs/ft³.

Minimum capacities are for top feed size of 800 mm (31") and end product of 100 mm (4"). Maximum capacities are for top feed size of 600 (24") mm and end product of 200 mm (8").

Capacity values are indicative only, crusher performance may vary depending on the feed gradation, feed moisture content, crushability of the material, crusher rpm, installed power and the crushing circuit design.

** Weights shown do not include drive motor package, support legs, maintenance platform, inlet and outlet chutes.



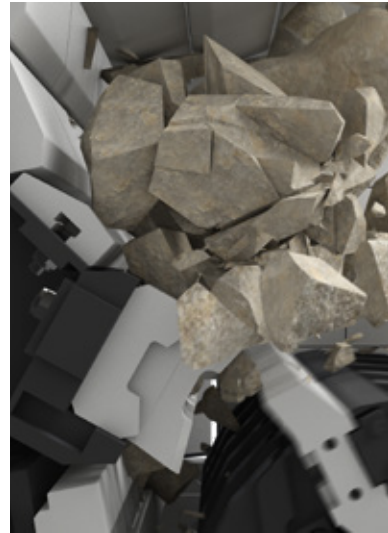
MSIH SERIES SECONDARY IMPACTORS

		MSIH 1110	MSIH 1112	MSIH 1115	MSIH 1415	MSIH 1420
		Rotor Diameter	1120	1120	1120	1400
Rotor Width	mm	44	44	44	55	55
	inch	1000	1200	1500	1500	2000
Feed Opening	mm	39	47	59	59	79
	inch	1040 x 550	1320 x 550	1560 x 550	1530 x 1000	2030 x 1000
Maximum Feed Size	mm	41 x 22	52 x 22	61 x 22	60 x 39	80 x 39
	inch	300	300	300	350	350
Capacity*	mm	12	12	12	14	14
	mtph	130 - 200	170 - 250	250 - 350	350 - 450	380 - 600
Power	stph	145 - 220	187 - 275	275 - 385	385 - 495	418 - 661
	kW	160	200	250 - 315	400	500
Weight**	HP	220	275	340 - 430	550	680
	kg	12280	14320	18800	28760	35000
	lbs	27070	31570	41450	63400	77160

* For material weighing 1.6 t/m³ or 100 lbs/ft³.

Capacity values are indicative only, crusher performance may vary depending on the feed gradation, feed moisture content, crushability of the material, crusher rpm, installed power and the crushing circuit design.

** Weights shown do not include drive motor package, support legs, maintenance platform, inlet and outlet chutes.



MSI SERIES SECONDARY IMPACTORS

		MSI 1210	MSI 1312	MSI 1315
		Rotor Diameter	1150	1300
Rotor Width	mm	45	51	51
	inch	1000	1250	1500
Feed Opening	mm	39	49	59
	inch	1080 x 825	1310 x 800	1510 x 800
Maximum feed size	mm	43 x 32	52 x 31	59 x 31
	inch	250	350	350
*Capacity	mm	10	14	14
	mtph	100 - 150	150 - 250	250 - 350
Power	stph	110 - 165	165 - 275	275 - 385
	kW	132 - 160	200	250 - 315
**Weight	HP	180 - 220	275	340 - 430
	kg	12400	18000	22600
	lbs	27340	39680	49820

* For material weighing 1.6 t/m³ or 100 lbs/ft³.

Capacity values are indicative only, crusher performance may vary depending on the feed gradation, feed moisture content, crushability of the material, crusher rpm, installed power and the crushing circuit design.

** Weights shown do not include drive motor package, support legs, maintenance platform, inlet and outlet chutes.



MEKA

MEKA CRUSHERS

CRUSHERS AND IMPACTORS THAT
MAKE YOU MORE MONEY FOR
YOUR OPERATIONS

MTI SERIES TERTIARY IMPACTORS

		MTI 1105	MTI 1110	MTI 1115	MTI 1307	MTI 1314
Rotor Diameter	mm	1100	1100	1100	1286	1286
	inch	43	43	43	51	51
Rotor Width	mm	500	1000	1500	655	1355
	inch	20	39	59	26	53
Feed Opening	mm	520 x 310	1020 x 310	1520 x 310	1040 x 550	1390 x 210
	inch	20 x 12	40 x 12	60 x 12	41 x 22	55 x 8
Maximum Feed Size	mm	150	150	150	90	90
	inch	6	6	6	3,5	3,5
Power	mtph	100 - 120	220 - 250	280 - 320	90 - 132	160 - 250
	stph	110 - 130	240 - 275	310 - 350	125 - 180	220 - 340
*Capacity	kW	110	200 - 250	315	100-200	220-250
	HP	150	275 - 340	430	110-130	240-275
**Weight	kg	8750	14000	17470	8400	13480
	lbs	19290	30860	38510	18520	29720

* For material weighing 1.6 t/m³ or 100 lbs/ft³. Capacity values are indicative only, crusher performance may vary depending on the feed gradation, feed moisture content, crushability of the material, crusher rpm, installed power and the crushing circuit design.

** Weights shown do not include drive motor package, support legs, maintenance platform, inlet and outlet chutes.

MVI-B SERIES VERTICAL SHAFT IMPACTORS-VSI

		MVI 90 ROR SD	MVI 90 ROR DD	MVI 90 ROS SD	MVI 90 ROS DD	MVI 70 ROR SD	MVI 70 ROR DD	MVI 70 ROS SD	MVI 70 ROS DD
Maximum Feed Size	mm	50	50	50	50	35	35	35	35
	inch	2	2	2	2	1 ³ / ₈	1 ³ / ₈	1 ³ / ₈	1 ³ / ₈
*Capacity	mtph	200	300	200	300	120	160	120	160
	stph	220	330	220	330	130	175	130	175
Power	kW	200 - 250	2 x 110 - 200	200 - 250	2 x 110 - 200	110 - 160	2 x 110	110 - 160	2 x 110
	HP	275 - 340	2 x 150 - 275	275 - 340	2 x 150 - 275	150 - 220	2 x 150	2 x 150 - 220	2 x 220
Speed	rpm	1400 - 1800	1400 - 1800	1400 - 1800	1400 - 1800	1500 - 2100	1500 - 2100	1500 - 2100	1500 - 2100
**Weight	kg	7590	9520	10110	11660	4960	5680	6380	7100
	lbs	16700	20990	22290	26730	10940	12520	14070	15650

* For material weighing 1.6 t/m³ or 100 lbs/ft³.

Capacity values are indicative only, crusher performance may vary depending on the feed gradation, feed moisture content, crushability of the material, crusher rpm, installed power and the crushing circuit design.

** Weights shown do not include drive motor package, support legs, maintenance platform, inlet and outlet chutes.

MVI-C SERIES VERTICAL SHAFT IMPACTORS-VSI

		MVI 90 ROR SD	MVI 90 ROR DD	MVI 90 ROS SD	MVI 90 ROS DD	MVI 90 SOS SD	MVI 90 SOS DD
Maximum Feed Size	mm	50	50	50	50	75	75
	inch	2	2	2	2	3	3
Capacity*	mtph	200	300	250	300	250	400
	stph	220	330	275	330	275	440
Power	kW	200 - 250	2 x 110 - 160	200 - 250	2 x 110 - 160	200 - 250	2 x 200
	HP	275 - 340	2 x 150 - 220	275 - 340	2 x 150 - 220	275 - 340	2 x 275
Speed	rpm	800 - 1700	800 - 1700	800 - 1600	800 - 1600	800 - 1400	800 - 1400
Weight**	kg	9330	10170	11170	12010	11665	13070
	lbs	20570	22420	24630	26480	25720	28820

* For material weighing 1.6 t/m³ or 100 lbs/ft³.

Capacity values are indicative only, crusher performance may vary depending on the feed gradation, feed moisture content, crushability of the material, crusher rpm, installed power and the crushing circuit design.

** Weights shown do not include drive motor package, support legs, maintenance platform, inlet and outlet chutes.

MCS / MCH SERIES CONE CRUSHERS

		MCS900	MCH900	MCH1150
*Capacity	mtph	60-214	60-165	80-340
	stph	66-235	66-181	80-374
Power	kW	110	110	200
	HP	150	150	275
Max. feed size	mm	160-240	85-130	80-210
	inch	6,3-9,4	3,3-5,1	3,1-8,3
Concaves		EC, C, MC	EC, C, MC	EC, C, MC, MF
CSS (Min - Max Setting)	mm	22-38	13-35	13-44
	inch	0,8-1,5	0,5-1,3	0,5-1,7
Eccentric Throw Range	mm	13-25	16-32	13-40
	inch	0,5-1,0	0,6-1,2	0,5-1,6
**Weight	kg	14200	11200	18200
	lbs	31305	24691	40124

* For material weighing 1.6 t/m³ or 100 lbs/ft³. Capacity values are indicative only, crusher performance may vary depending on the feed gradation, feed moisture content, crushability of the material, crusher rpm, installed power and the crushing circuit design.

** Weights shown do not include drive motor package, support legs, maintenance platform, inlet and outlet chutes.



MIS SERIES INCLINED SCREENS

2 DECKS		MS 1540/2	MS 1650/2	MS 2050/2	MS 2060/2	MS 2460/2
Weight	kg	3631	4225	4600	5592	6111
	lbs	8005	9314,5	10141.3	12328.2	13472.4
Width x Length	mm	1500 x 4000	1600 x 5000	2000 x 5000	2000 x 6000	2400 x 6000
	inch	59 x 157.5	63 x 197	79 x 197	70 x 236	94,5 x 236
Power	kW	15	15	15	18,5	22
	HP	20	20	20	25	30

* Weights shown do not include drive motor package, support legs, maintenance platform, inlet and outlet chutes.

3 DECKS		MS 1540/3	MS 1650/3	MS 2050/3	MS 2060/3	MS 2460/3
Weight	kg	4610	6220	6731	7468	8158
	lbs	10163.3	13712.7	14839.3	16464.1	17985.3
Width x Length	mm	1500 x 4000	1600 x 5000	2000 x 5000	2000 x 6000	2400 x 6000
	inch	59 x 157.5	63 x 197	79 x 197	70 x 236	94,5 x 236
Power	kW	15	18,5	18,5	22	30
	HP	20	25	25	30	40

* Weights shown do not include drive motor package, support legs, maintenance platform, inlet and outlet chutes.

4 DECKS		MS 1540/4	MS 1650/4	MS 2050/4	MS 2060/4	MS 2460/4
Weight	kg	6176	7534	8750	9289	9943
	lbs	13615.7	16609.6	19290.4	20478.7	21920.5
Width x Length	mm	1500 x 4000	1600 x 5000	2000 x 5000	2000 x 6000	2400 x 6000
	inch	59 x 157.5	63 x 197	79 x 197	70 x 236	94,5 x 236
Power	kW	22	18,5	22	22	30
	HP	30	25	30	30	40

* Weights shown do not include drive motor package, support legs, maintenance platform, inlet and outlet chutes.

MHS SERIES HORIZONTAL SCREENS

		MHS 1548/3	MHS 1848/2	MHS 1848/3	MHS 1860/2	MHS 1860/3	MHS 2460/2	MHS 2460/3
Width x Length	mm	1562 x 4877	1930 x 4877	1930 x 4877	1930 x 6096	1930 x 6096	2540 x 6096	2540 x 6096
	feet	5 x 16	6 x 16	6 x 16	6 x 20	6 x 20	8 x 20	8 x 20
Number of decks		3	2	3	2	3	2	3
Power	kW	30	30	30	30	37	37	37
	Hp	40	40	40	40	50	50	50
Sheave (Screen)	mm	Ø620	Ø620	Ø620	Ø620	Ø620	Ø620	Ø620
	inch	Ø24,4	Ø24,4	Ø24,4	Ø24,4	Ø24,4	Ø24,4	Ø24,4
Sheave (Motor)	mm	Ø306-Ø365	Ø306-Ø365	Ø306-Ø365	Ø306-Ø365	Ø306-Ø365	Ø306-Ø365	Ø306-Ø365
	inch	Ø12-Ø14.3	Ø12-Ø14.3	Ø12-Ø14.3	Ø12-Ø14.3	Ø12-Ø14.3	Ø12-Ø14.3	Ø12-Ø14.3
Speed	rpm	730-870	730-870	730-870	730-870	730-870	730-870	730-870
Weight*	kg	8781	7781	9275	8850	10588	12517	14267
	lbs	19359	17154	20448	19511	23342	27595	31453

* Weights shown do not include drive motor package, support legs, maintenance platform, inlet and outlet chutes.

MDS SERIES DEWATERING SCREENS

		MDS 1224	MDS 1824	MDS 1840
WidthxLength	mm	1200 x 2400	1800 x 2400	1800 x 4000
	feet	4 x 8	6 x 8	6 x 13
Capacity*	mtph	90	150	210
	stph	100	165	231
Power	kW	2x2,9	2x7.4	2x6,1
	HP	2x3.9	2x10	2x8.2
Weight**	kg	1900	2750	4300
	lbs.	4190	6060	9480

* Capacity values are indicative only, results may vary depending on feed gradation, silt, clay content, density, amount of water used, equipment configuration and application.

** Weights shown do not include support legs, maintenance platform, inlet and outlet chutes.



MEKA WASHERS

EXCELLENT RELIABILITY, OPERATE
AND PROVIDE FAST ONSITE
INSTALLATION

MWL SERIES LOG WASHERS

		MLW0990	MLW0910	MLW1190	MLW1110	MLW1210
Diameter x Length	mm x mm	905 x 9000	905 x 10500	1120 x 9000	1120 x 10500	1220 x 10500
	inch x feet	36 x 30	36 x 35	44 x 30	44 x 35	48 x 35
Capacity*	mtph	50-125	50-125	75-175	75-175	110-300
	stph	55-138	55-138	83-193	83-193	121-330
Material	mm	75	75	100	100	125
	inch	3	3	4	4	5
Power	kW	90-110	90-110	110-160	160	200
	hp	125-150	125-150	150-200	200	300
Screw(rpm)	rpm	32	32	26	26	26
Weight**	kg	26407	30395	32275	37150	40527
	lbs	58229	67024	71169	81918	89366
Water	m ³ /h	114	114	171	171	182
	gpm	500	500	750	750	800

* Capacity values are indicative only, results may vary depending on feed gradation, silt, clay content, density, amount of water used, equipment configuration and application.

** Weights shown include drive motor package, support legs, maintenance platform, inlet and outlet chutes.

MWC SERIES COARSE WASHERS

		MCWS 0954	MCWS 1163	MCWD 0954	MCWD 1163
		(Single Screw)	(Single Screw)	(Double Screw)	(Double Screw)
Diameter x Length	mm x mm	928 x 5450	1118 x 6350	928 x 5450	1118 x 6350
	inch x feet	36 x 18	44 x 20	36 x 18	44 x 20
Capacity*	mtph	130-160	180-230	270-320	360-450
	stph	150-175	200-250	300-350	400-500
Material	mm	0-65	0-75	0-65	0-75
	inch	0-2½	0-3	0-2½	0-3
Power	kW	30	37	2 x 30	2 x 37
	hp	40	50	2 x 40	2 x 50
Screw	rpm	16-32	13-26	16-32	13-26
Weight**	kg	6500	9000	10800	15500
	lbs	14333	19846	23815	34179
Water	m ³ /h	90-135	110-170	160-220	200-250
	gpm	400-600	500-750	700-900	900-1100

* Capacity values are indicative only, results may vary depending on feed gradation, silt, clay content, density, amount of water used, equipment configuration and application.

** Weights shown include drive motor package, support legs, maintenance platform, inlet and outlet chutes.

MWF SERIES FINE WASHERS

		MFWS 0976	MFWD 0976	MFWS 1197	MFWD 1197	MFWS 1310	MFWD 1310	MFWS 1610	MFWD 1610
		Single Screw	Double Screw	Single Screw	Double Screw	Single Screw	Double Screw	Single Screw	Double Screw
Diameter x Length	mm x mm	917 x 7620	917 x 7620	1120 x 9700	1120 x 9700	1370 x 10300	1370 x 10300	1675 x 10500	1675 x 10500
	inch x feet	36 x 25	36 x 25	44 x 32	44 x 32	54 x 34	54 x 34	66 x 35	66 x 35
Capacity*	mtph	23-90	45-180	35-160	70-315	60-250	125-500	90-360	180-725
	stph	25-100	50-200	40-175	80-350	70-275	140-550	100-400	200-800
Material Size	mm	0-10	0-10	0-10	0-10	0-10	0-10	0-10	0-10
	inch	3/8	3/8	3/8	3/8	3/8	3/8	3/8	3/8
Power	kW	15	2 x 15	18,5	2 x 18,5	30	2 x 30	45	2 x 45
	HP	20	2 x 20	25	2 x 25	40	2 x 40	60	2 x 60
Screw	rpm	10-21	10-21	8-17	7-14	7-14	7-14	5-11	5-11
Weight**	kg	6500	11700	10500	18850	13950	25000	22000	40250
	lbs	14333	25799	23153	41566	30761	55127	48512	88754
Water-100 Mesh	gpm	720	1250	1720	2800	2090	3700	2590	4375
	m ³ /h	164	284	391	637	475	842	589	995
Water-150 Mesh	gpm	320	640	760	1440	930	1750	1150	2100
	m ³ /h	73	146	173	328	212	398	262	478
Water-200 Mesh	gpm	180	360	460	810	575	935	650	1095
	m ³ /h	41	82	105	184	131	213	148	249

* Capacity values are indicative only, results may vary depending on feed gradation, silt, clay content, density, amount of water used, equipment configuration and application.

** Weights shown include drive motor package, support legs, maintenance platform, inlet and outlet chutes.

MCSP SERIES COMPACT PLANTS

		MCSP 1-90	MCSP 1-150	MCSP 2-210
Capacity*	mtph	90	150	210
	stph	100	165	231
Maximum Water Requirement	m ³ /h	270	450	630
Cyclone Diameter	gal/min	1188	1981	2773
	mm	500	660	2 x 660
Screen Motor Power	inch	20	26	2 x 26
	kW	2 x 2,88 1500 rpm	2 x 7,35 1500 rpm	2 x 6,1 1000 rpm
Dewatering Screen Size	HP	2 x 3,86 1500 rpm	2 x 9,85 1500 rpm	2 x 8,2 1000 rpm
	mm	1200 x 2400	1800 x 2400	1800 x 4000
Pump Size	feet	4x8	6x8	6x13
	inch	8 / 6	8 / 6	10 / 8
Pump Power	mm	200 x 150	200 x 150	250 x 200
	kW	45	55	75
Weight**	HP	60	74	100
	kg	7475	10900	16750
	lbs	16480	24030	36927

* Capacity values are indicative only, results may vary depending on feed gradation, silt, clay content, density, amount of water used, equipment configuration and application.

** Weights shown include drive motor package, support legs, maintenance platform, inlet and outlet chutes.



MEKA PORTABLE UNITS

TRULY PORTABLE,
ROAD LEGAL



IMAGES
8 Portable Jaw Crusher with Extended Hopper
9 Portable VSI Crusher with Feed Hopper
10 Portable Screen
11 Portable Wash Plant



MEKA

sales@mekaglobal.com
www.mekaglobal.com